



## Manual Batch Systems

The Manual Batch Systems designed to allow small to medium-sized industrial facilities, such as corrugators, ink and dye manufacturers, and small food processors, to treat wastewater flows up to 10,000 gallons per day. These systems are designed to utilize the FloccinAgent™ line of products, and therefore dispense with the numerous chemical metering pumps and hazardous chemicals characteristic of conventional chemistries and treatment systems.

### MBS Sizing and Budgetary Prices

Gallons/batch	Filter press size <sup>1</sup>	Budgetary Price <sup>2</sup>
500	2 cu ft	\$39,500
1,000	4 cu ft	\$57,500
1,500	6 cu ft	\$84,500
2,500	8 cu ft	\$99,500
5,000	15 cu ft	\$115,500

<sup>1</sup> Filter Press size is based on total suspended solids (TSS) of 1,000 ppm

<sup>2</sup> Exact price is dependent on site-specific parameters

### Process Description:

Pump the wastewater from the Sump to the Equalization Tank. Transfer the wastewater, as needed, to the Reaction Tank; turn on the mixing motor, and add the FloccinAgent™. Mix until the floc breaks. Allow the resulting sludge to settle for 30 minutes, and decant the clear water through the filter press. Dewater the sludge through the press, and then open press to remove the dry sludge cake.

**Options:** The following Batch Treatment System options are available:

Sump Pump

pH Adjustment System

Effluent Sampling Tank

Automation

Water Reuse System

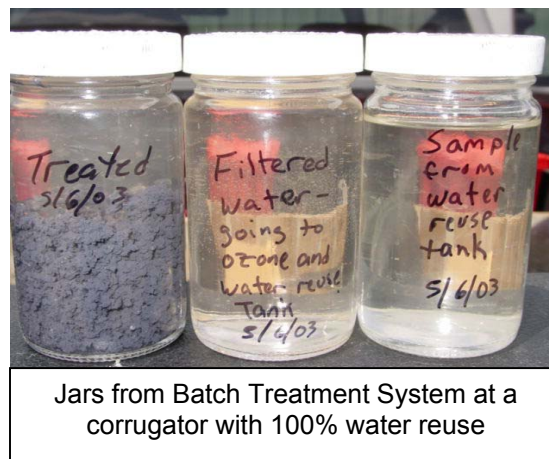
Ozone Treatment System

Access Platform

Final Filters



Typical Batch System Installation

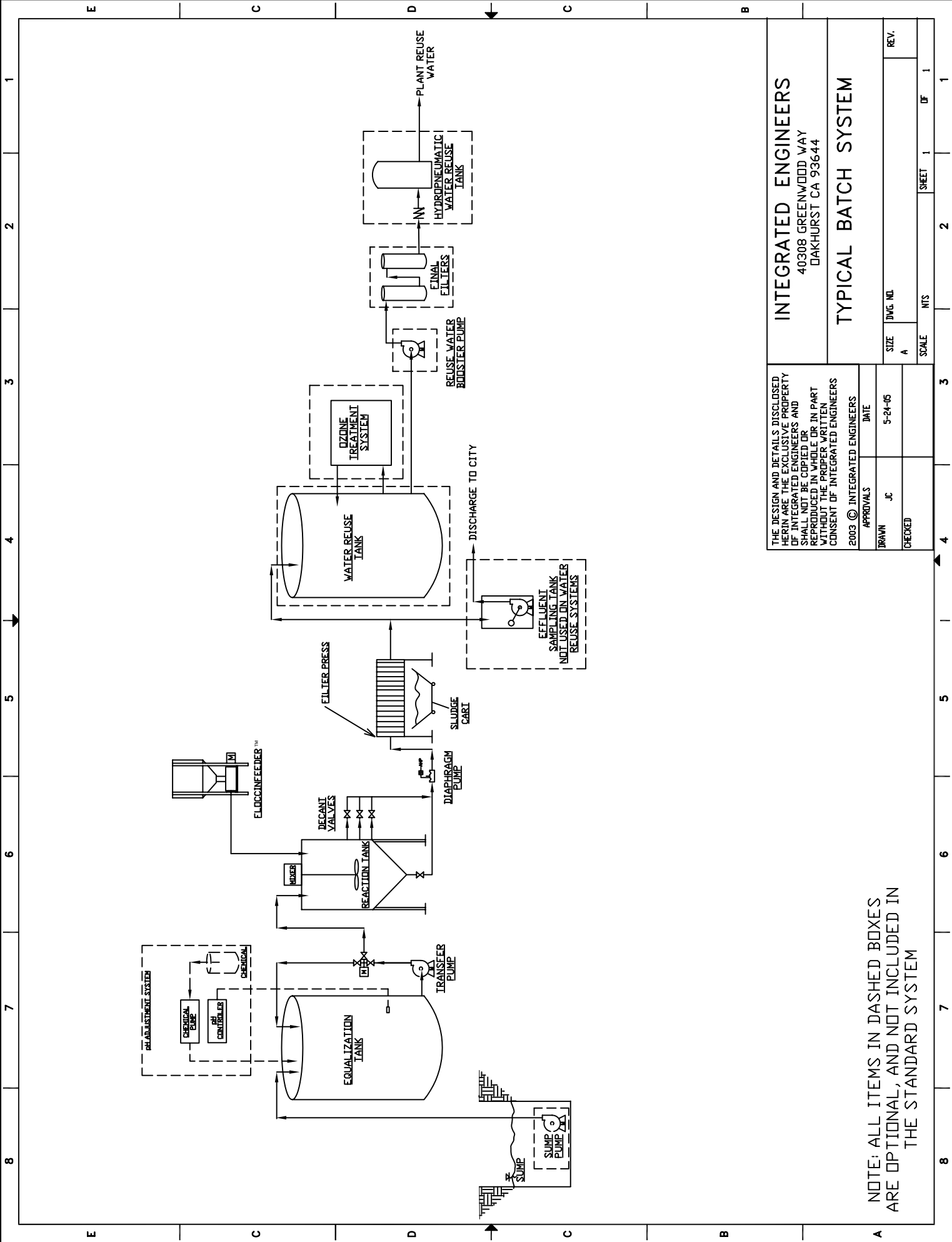


Jars from Batch Treatment System at a corrugator with 100% water reuse

40308 Greenwood Way  
Oakhurst, Ca. 93644

Phone (559) 683-8284  
Fax (559) 683-8913

[www.wecleanwater.com](http://www.wecleanwater.com)  
sales@wecleanwater.com



NOTE: ALL ITEMS IN DASHED BOXES ARE OPTIONAL, AND NOT INCLUDED IN THE STANDARD SYSTEM

THE DESIGN AND DETAILS DISCLOSED HEREIN ARE THE EXCLUSIVE PROPERTY OF INTEGRATED ENGINEERS AND SHALL NOT BE COPIED OR REPRODUCED IN WHOLE OR IN PART WITHOUT THE PROPER WRITTEN CONSENT OF INTEGRATED ENGINEERS

APPROVALS	DATE
DRAWN JC	5-24-05
CHECKED	

INTEGRATED ENGINEERS 40308 GREENWOOD WAY DAKHURST CA 93644	
TYPICAL BATCH SYSTEM	
SIZE	REV.
A	
SCALE	SHEET
N.T.S.	1 OF 1